



GMT MONTHLY MEMBERSHIP PROGRESS REPORT

Results as of: 6/30/2020

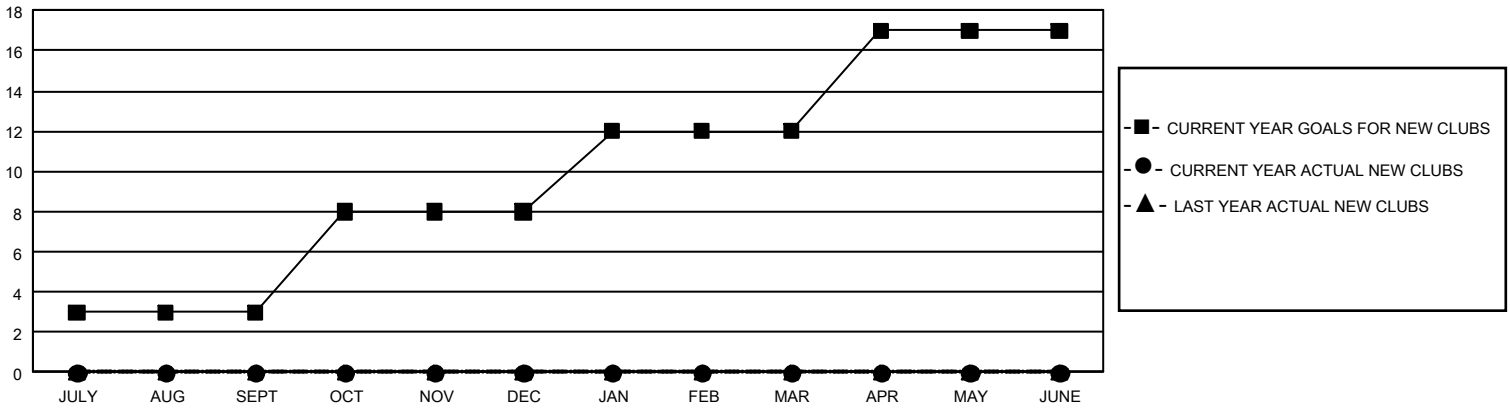
GMT Constitutional Area 1, Group H

GMT: OPEN

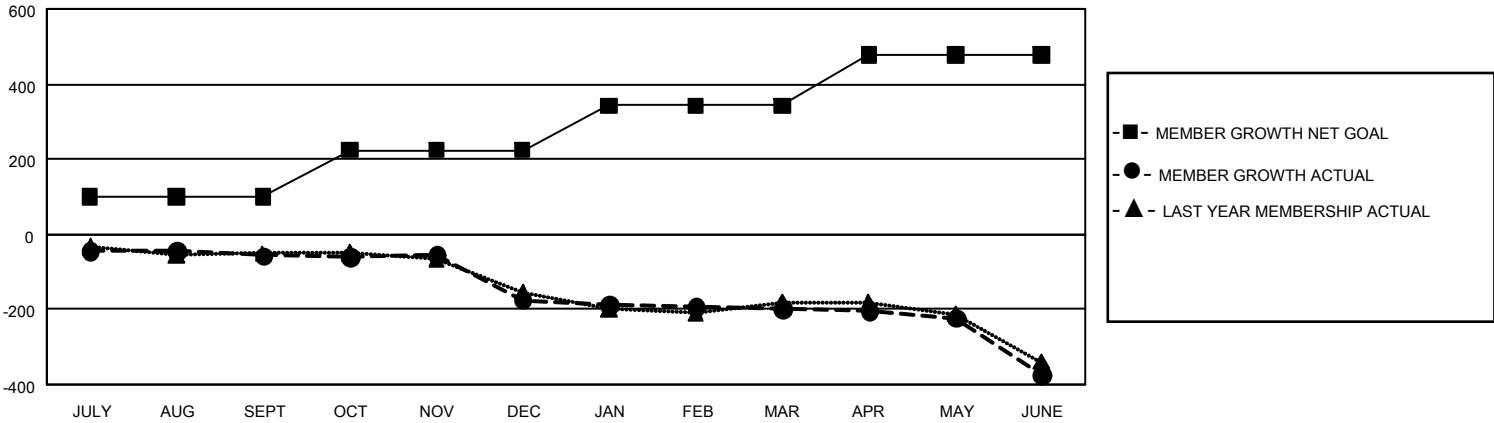
REPORT DOES NOT INCLUDE CLUBS IN UNDISTRICTED AREAS.

Clubs				Members			
RESULTS FOR 2019-2020				RESULTS FOR 2019-2020			
QUARTER	NEW CLUB GOAL	NEW CLUBS	DROPPED CLUBS	QUARTER	MEMBER GROWTH NET GOAL	MEMBER GROWTH ACTUAL	DROPPED MEMBERS ACTUAL (including transfers)
JULY/AUG/SEPT	9	0	2	JULY/AUG/SEPT	297	168	183
OCT/NOV/DEC	15	0	3	OCT/NOV/DEC	375	110	225
JAN/FEB/MAR	12	0	2	JAN/FEB/MAR	357	167	164
APR/MAY/JUNE	15	0	2	APR/MAY/JUNE	402	79	235

GOALS AND ACTUAL NEW CLUBS CUMULATIVE



GOALS AND ACTUAL MEMBERS CUMULATIVE



DROPPED CLUBS: 9	130 CLUBS OF 253 ADDED 1 OR MORE NEW MEMBERS	<u>GENDER DISTRIBUTION</u> MALE 3,481 (63.58%) FEMALE 1,994 (36.42%)
<u>DROPPED MEMBERS</u> DECEASED 93 CLUB CANCELLED 16 OTHER 698 <hr/> TOTAL 807	CLICK HERE FOR CUMULATIVE MEMBERSHIP DATA	TOTAL FAMILY UNIT MEMBERS 1,447 FAMILY MEMBERS PAYING HALF DUES 738